

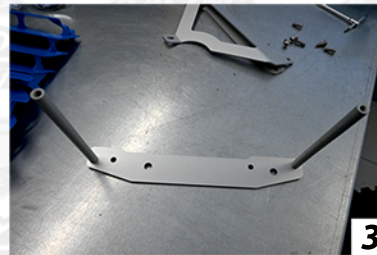
## Protezioni radiatore TM EN 250/300 2T '2022 Radiator guard for TM EN 250/300 2S 2022



1



2

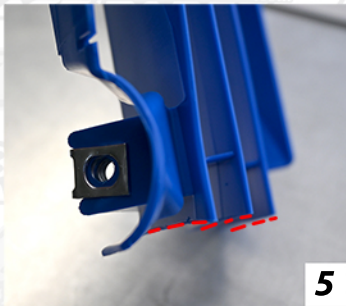


3

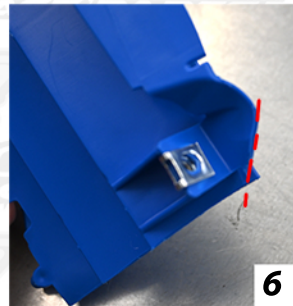


4

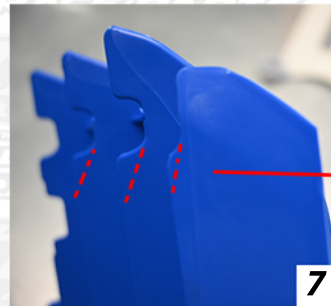
Togliere sella e serbatoio (foto 1). Smontare griglie radiatore (foto 2). Montare la piastra interna con le relative barre lunghe uguali (foto 3). Svitare radiatore e montare piastra interna in posizione (foto 4)  
Remove saddle and tank (pic 1). Remove radiator grilles (pic 2). Mounting the plate interns with the relative bars (pic 3)  
Unscrew radiator and mount internal plate in place (photo 4)



5



6



7



8

Prima di montare la piastra esterna modificare le griglie di plastica DX. Tagliare le punte inferiori (foto 5)  
Tagliare la porzione tonda in eccesso (foto 6). Smussare angoli (foto 7-8)  
Before mounting the outer plate, modify right plastic grids.(pic 5). Cut the lower tips (pic 6).  
Beveling corners(pic 7-8)



9



10



11

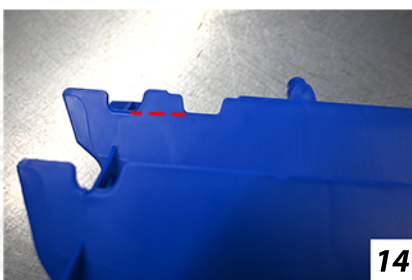


12

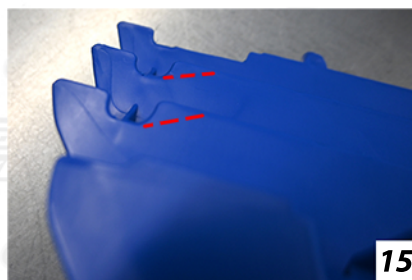


13

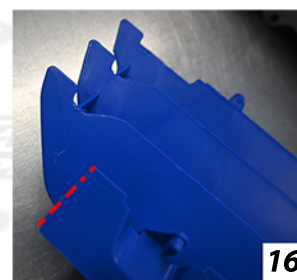
Tagliare ancora la punta esterna nella parte superiore della griglia (foto 9). montare la griglia.  
Montare piastra esterna (foto 10). Prendere piastra interna lato SX e montare relative barre, la barra corta parte bassa(foto 11). Svitare radiatore e montare piastra interna in posizione (foto 12-13)  
Cut the outer tip at the top of the grid (photo 9). assemble the grid. Assemble outer plate (photo 10).  
Take left side internal plate and mount related bars (photo 11) Unscrew radiator and mount internal plate in place (photo 12-13)



14



15



16

Modificare parte superiore della griglia SX. Tagliare dove tratteggiato (foto 14). Smussare angoli (foto 15)  
Tagliare punta esterna parte superiore (foto 16)  
Modify upper part of left grid. Cut where hatched (photo 14). Beveling corners(photo 15)  
Cut outer tip of top part (photo 16)



Montare piastra esterna (foto 17). Montare griglia modificata (foto 18), rimontare serbatoio, fianchetti e sella.  
Assemble outer plate (photo 17). Assemble modified grid (photo 18), reassemble tank, side panels and seat.